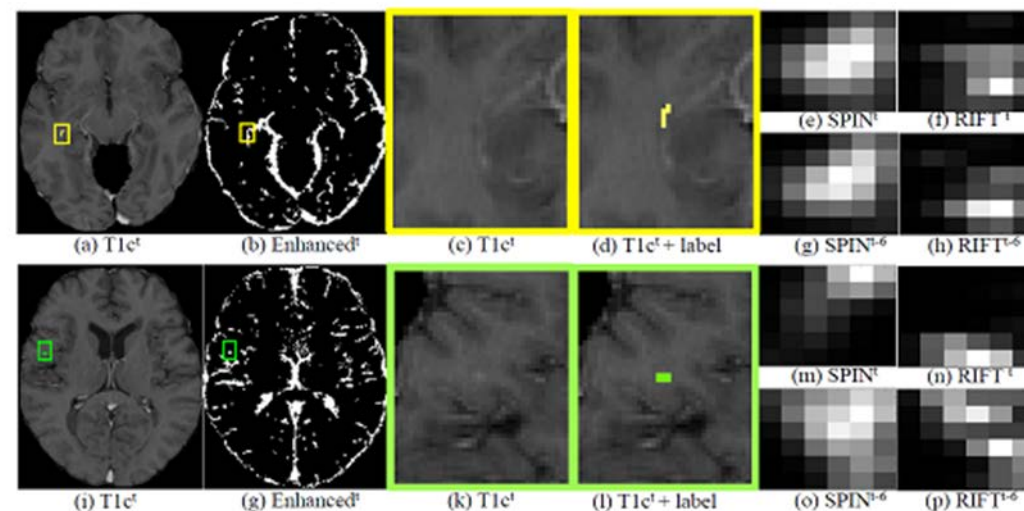




research and INNOVATION

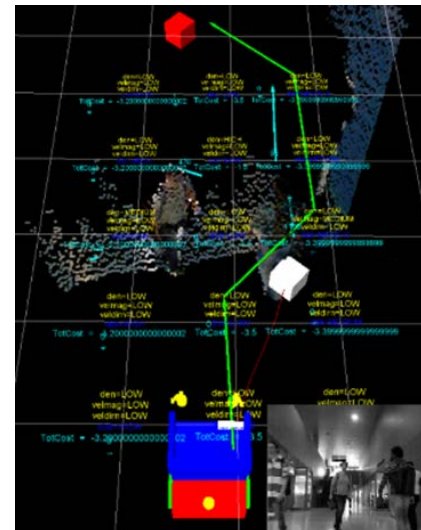


- 22 Faculty members
- 150+ graduate students and 10+ postdoctoral fellows
- Robotics, Computer Graphics, AI/Machine Learning, Machine Vision, Medical image analysis, Human Computer interfaces and Systems/Controls



# Reasoning and Learning Lab

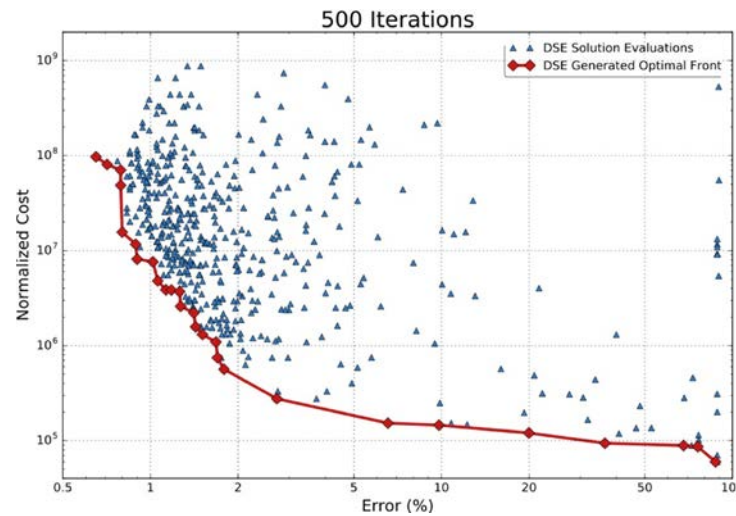
- Doina Precup (Reinforcement learning)
- Joëlle Pineau (Reinforcement learning and robotics)
- Jackie Cheung (National Language Processing)
- Prakash Panagaden (theory of probabilistic systems)





# Department of Electrical and Computer Engineering

- Tools for efficiently designing neural networks



- Novel architecture for hardware implementation of neural networks
  - Current estimates suggest reduction between 60 and 90% of the number of circuit elements



research and  
**INNOVATION**

# Non-traditional AI data scientists

